

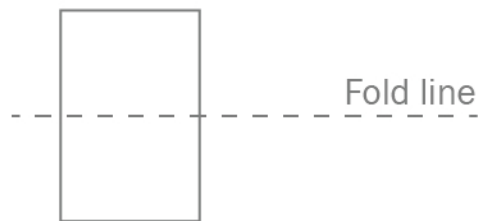


Visual Stimulation Cards

Set: **Basic Shapes**

Recommended Age: **0 to 3 months**

- Print out this set on 8" x 11" paper
(heavy weight works best, but it's not mandatory)
- Fold the Page in half
(you may glue the top and bottom together if you wish)



- Show the images to your baby
(place the image 10" to 15" from the baby)

Like our cards?

Come back often to check for new free stuff.

www.trainbabybrain.com

